

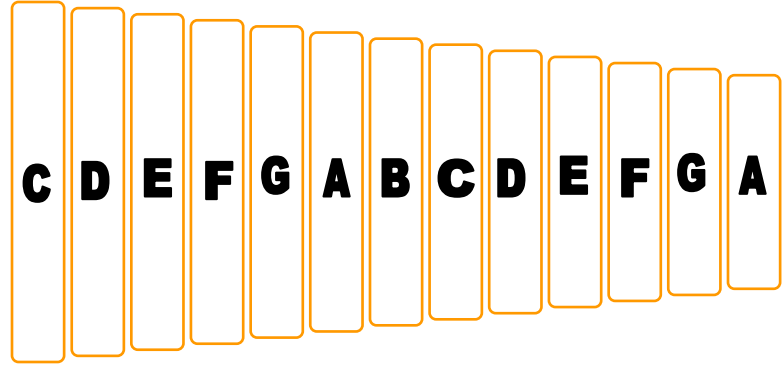
# Melody Study Guide

~2<sup>nd</sup> Grade~

Music Staff-



Treble Clef-



Pitch- The highness and lowness of sound.

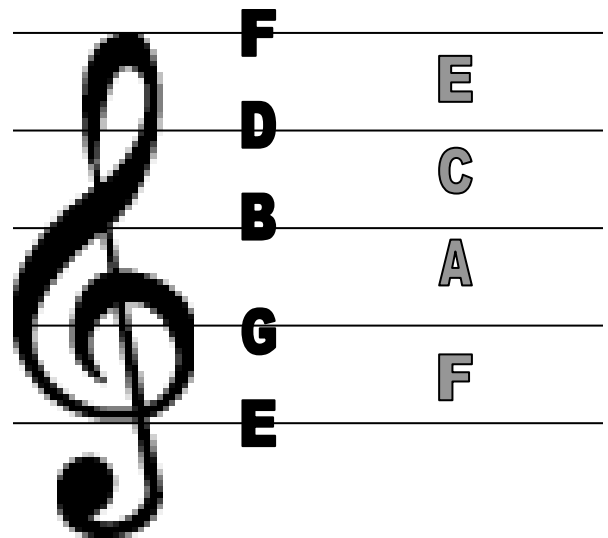
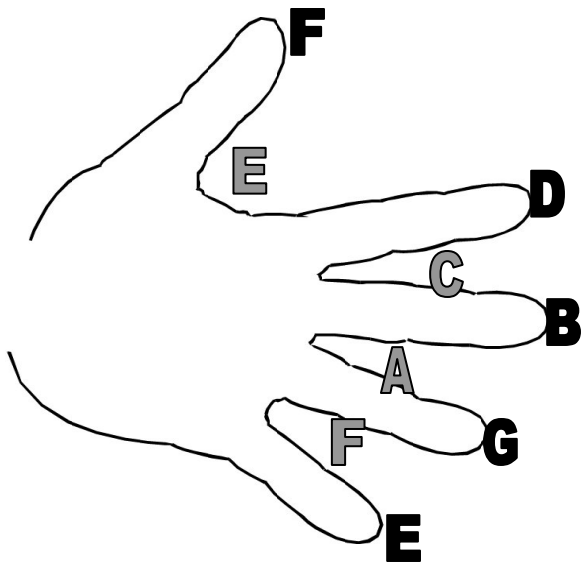
The Music Alphabet- **A B C D E F G**, 7 pitches used to create melodies that can be repeated in the same pattern.

Melody- The familiar “tune” of a song. Rhythm + Pitch = Melody

Sayings to remember your notes on the treble clef staff:

Line Notes- **Empty Garbage Before Dad Flips**

Space Notes- Space rhymes with **FACE**



Try it out! Can you write the correct name of the note on the staff?

answers: 1. F 2. B 3. G 4. C 5. F