

Student's Name: _____

Teacher's Name: _____

I. Review from 3rd Grade

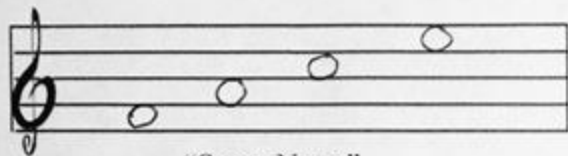
"Melody" Study Guide
4th Grade

Test on

Naming Notes/Pitches on the Treble Clef Staff

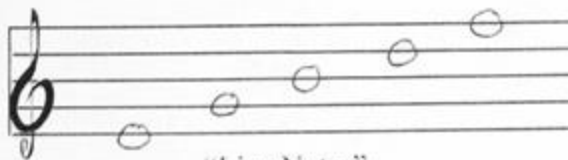
Follow these steps to help you figure out the names of the notes/pitches on the treble clef staff.

1. Is it a space note or a line note?



"Space Notes"

Notes between the lines on the staff

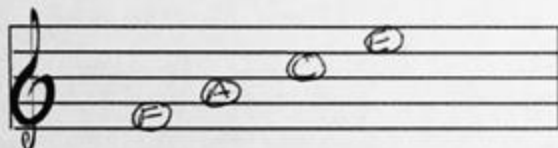


"Line Notes"

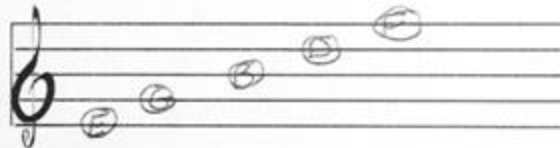
-The staff line goes right through the note



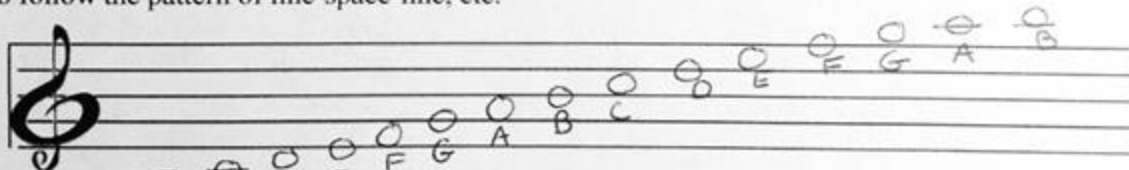
2. If it is a space note, use F A C E to find the right name (remember to go from the bottom up).



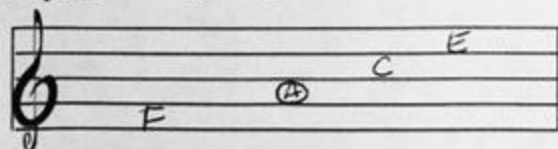
If it is a line note, use the saying Empty Garbage Before Dad Flips to find the right name (remember to go from the bottom up).



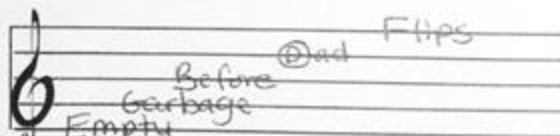
3. Use the order of the music alphabet (ABCDEFG) if the note is above or below the staff (ledger lines). Make sure to follow the pattern of line-space-line, etc.



Examples:

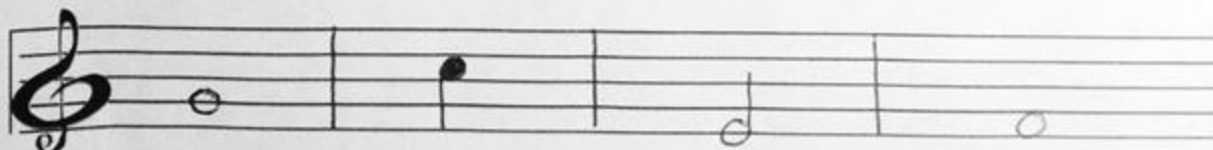


1. "Space Note" = FACE
2. Note name in 2nd space = A



1. "Line Note" = Empty Garbage Before Dad Flips
2. "Note name on 4th line = D

Try it:



1. _____
2. _____
3. _____
4. _____

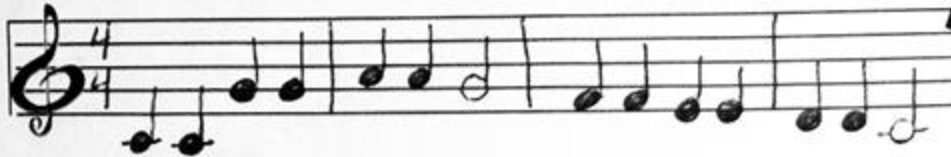
Student's Name: _____

Teacher's Name: _____

I. Review from 3rd Grade continued

A. Melody

1. Melody is how the tune moves up, down, same, step and skip or the familiar tune of a song.
2. Some examples of melodies are:



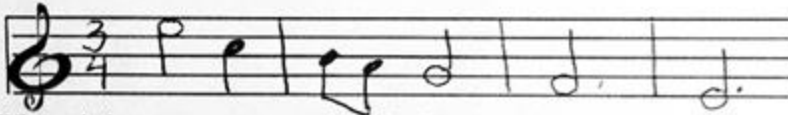
Twinkle,
Twinkle, Little

B. Direction

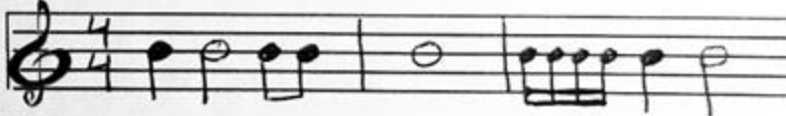
1. Direction is how notes or pitches move up, down or same.
2. When pitches or notes are getting higher, then the direction of the melody is up.



3. When pitches or notes are getting lower, then the direction of the melody is down.



4. When pitches or notes repeat, then the direction of the melody is same.



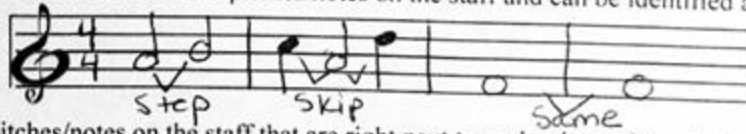
C. Music Alphabet

1. The music alphabet is only 7 letters: A, B, C, D, E, F, G.

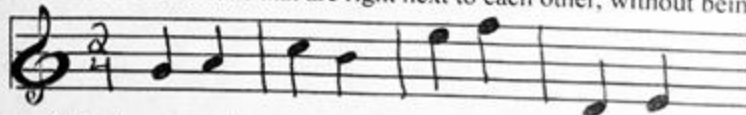
II. New Material

D. Interval

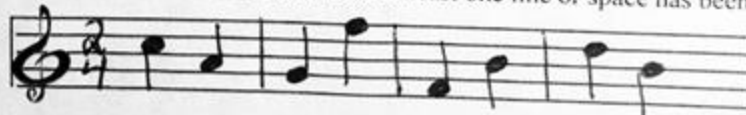
1. An interval is the distance between two pitches/notes on the staff and can be identified as moving by step, skip, or same.



2. A step is any two pitches/notes on the staff that are right next to each other, without being the same.



3. A skip is any two pitches/notes on the staff where at least one line or space has been skipped to get to the 2nd note.



4. Same is two pitches/notes that repeat on the staff; two pitches/notes on the exact same line or space.

